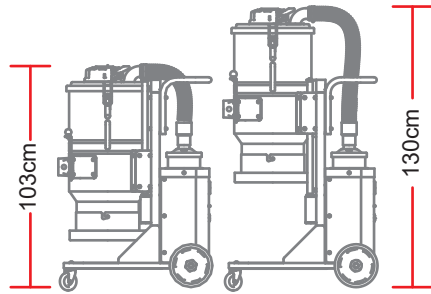


DE2000

Single phase 2 motors HEPA dust extractor

DE2000 is a two engine HEPA dust extractor. It is equipped with a main filter as the first and two H13 filter as the final. Each HEPA filter is individually tested and certified to have a minimum efficiency of 99.99% at 0.3 microns, which meets the new silica requirements. This professional dust extractor is excellent for building, grinding, plaster and concrete dust.



Main features:

1. The whole vacuum is formally Class H certified by SGS with safety standard EN 60335-2-69:2016, secure for building materials that may contains potential high risk.
2. OSHA compliant H13 HEPA filter tested and certified with EN1822-1 and IEST RP CC001.6 standard.
3. Unique jet pulse filter cleaning system, efficiently purges the pre-filter without opening the vacuum to maintain a smooth airflow, and to avoid creating a second dust hazard.
4. The 2 motors can be controlled separately, enable the operator choose different powers as wanted.
5. Continuous drop down bag disposal system ensure a easy and dust-free bag changes.
6. The height can be lowerd to 103cm when transportation, user friendly. (Optional)

Model	DE2000	DE2000 Plus
Power (kw)	2.4kw	3.4kw
Voltage	240V 50/60Hz	220V-240V 50/60Hz
Amps	9.6	15
Airflow (m ³ /h)	400	440
Vacuum (mBar)	240	320
Pre-filter	3.0m ² >99.5%@1.0um	
Hepa filter(H13)	2.4m ² >99.99%@0.3um	
Filter cleaning	Jet pulse filter cleaning	
Dimension (mm)	570X710X1300	
Weight (kg)	48	
Collection	Continuous drop-down bag	

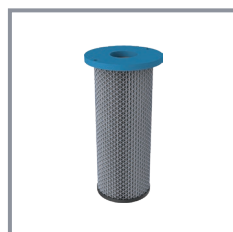
Standard accessory	
	
D50 floor brush	D50 S wand, aluminum
	
D70/50 reducer	D50 EVA hose ,7.5m
	
D50 hose cuff, 2-pc	



Jet pulse filter cleaning



Pre-filter (F8)



Hepa filter(H13)